

3-27. FUEL TANK VENT LINE AND FILTER REPLACEMENT

This task covers:

a. Removal

b. Installation

INITIAL SETUP:

Tools

General mechanic's tool kit:
automotive (Appendix B, Item 1)

Manual References

TM 9-2320-280-10
TM 9-2320-280-24P

Materials/Parts

Tiedown strap (Appendix G, Item 312)
Locknut (Appendix G, Item 70)

Equipment Condition

- Fuel tank removed (para. 3-24).
- Hood raised and secured (TM 9-2320-280-10).

CAUTION

Cover or plug all open hoses and connections immediately after disconnection to prevent contamination. Remove all plugs prior to connection.

NOTE

For fuel tank vent line filter replacement, perform steps 5, 8, and 9 only.

a. Removal

1. Remove clip (9) securing fuel tank vent line (3) to vent line (6).
2. Remove two capscrews (2) securing clamps (1) and (7) and vent lines (3) and (6) to brackets (8).
3. Remove tiedown strap (4) securing vent line (6) and fuel lines (5). Discard tiedown strap (4).
4. Disconnect vent line (3) from elbow (16).
5. Loosen two clamps (14) and remove vent line (15) from vent line filter (13) and elbow (16).
6. Remove two clamps (14) from vent line (15).
7. Remove two clamps (1) from vent line (3).

NOTE

Perform step 8 only when deep water fording kit is installed.

8. Disconnect deep water fording vent line (19) from vent line filter (13).
9. Remove capscrew (18), washer (11), locknut (12) clamp (10) and vent line filter (13) from body bracket (17). Discard locknut (12).

b. Installation

NOTE

For fuel tank vent line filter replacement, perform steps 1, 2, and 5 only.

1. Install clamp (10) and vent line filter (13) to body bracket (17) with washer (11), capscrew (18), and locknut (12).

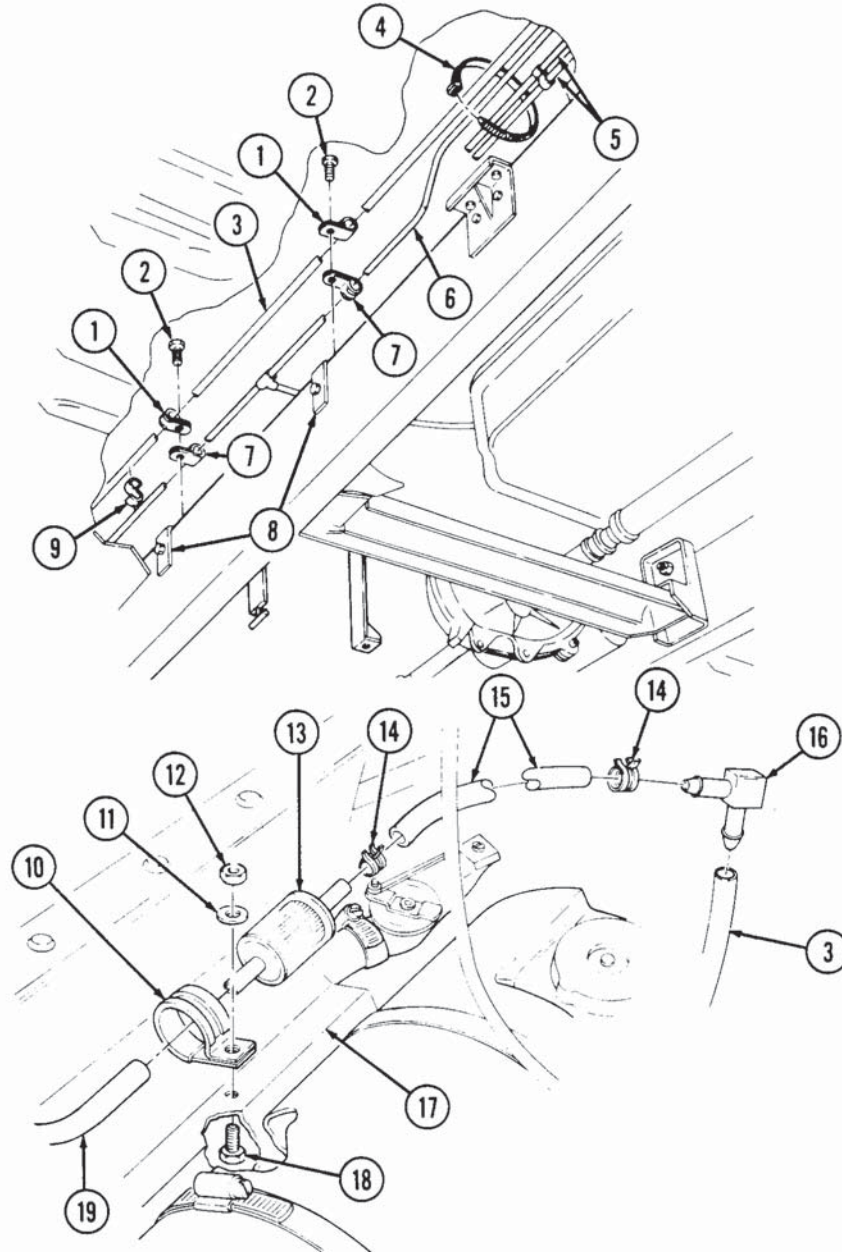
NOTE

Perform step 2 only when deep water fording kit is installed.

2. Connect deep water fording vent line (19) to vent line filter (13).

3-27. FUEL TANK VENT LINE AND FILTER REPLACEMENT (Cont'd)

3. Install two clamps (1) on vent line (3).
4. Install two clamps (14) on vent line (15).
5. Install vent line (15) to vent line filter (13) and elbow (16) and tighten two clamps (14).
6. Connect vent line (3) to elbow (16).
7. Install vent line (3) to vent line (6) and fuel lines (5) with tiedown strap (4).
8. Install vent lines (3) and (6) and two clamps (1) and (7) to brackets (8) with two capscrews (2).
9. Secure vent line (3) to vent line (6) with clip (9).



FOLLOW-ON TASKS:

- Install fuel tank (para. 3-24).
- Lower and secure hood (TM 9-2320-280-10).