

3-42. ACCELERATOR LINKAGE MAINTENANCE

This task covers:

- | | |
|-------------------------------------|--|
| <p>a. Removal
b. Inspection</p> | <p>c. Installation
d. Adjustment</p> |
|-------------------------------------|--|

INITIAL SETUP:

Tools

General mechanic's tool kit:
automotive (Appendix B, Item 1)

Personnel Required

One mechanic
One assistant

Materials/Parts

Four locknuts (Appendix G, Item 70)
Cotter pin (Appendix G, Item 11)
Assembled locknut (Appendix G, Item 131)
Lubricating oil, seasonal grade of OE
(Appendix C, Item 32)

Manual References

TM 9-2320-280-10
TM 9-2320-280-24P

Equipment Condition

- Hood raised and secured (TM 9-2320-280-10).
- Engine access cover removed (para. 10-15).

a. Removal

1. Remove cotter pin (15) and washer (16) and disconnect accelerator cable clevis (18) from accelerator pedal rod (14). Discard cotter pin (15).
2. Remove hitch pin (1) and washer (2) and disconnect hand throttle clevis (3) from accelerator pedal rod (14).
3. Remove assembled locknut (19) and harness clamp (21) from lower capscrew (25). Discard assembled locknut (19).
4. Remove three locknuts (22), washers (23), capscrews (25), washers (23) and accelerator rod retainers (24) from cowl (20). Discard locknuts (22).

NOTE

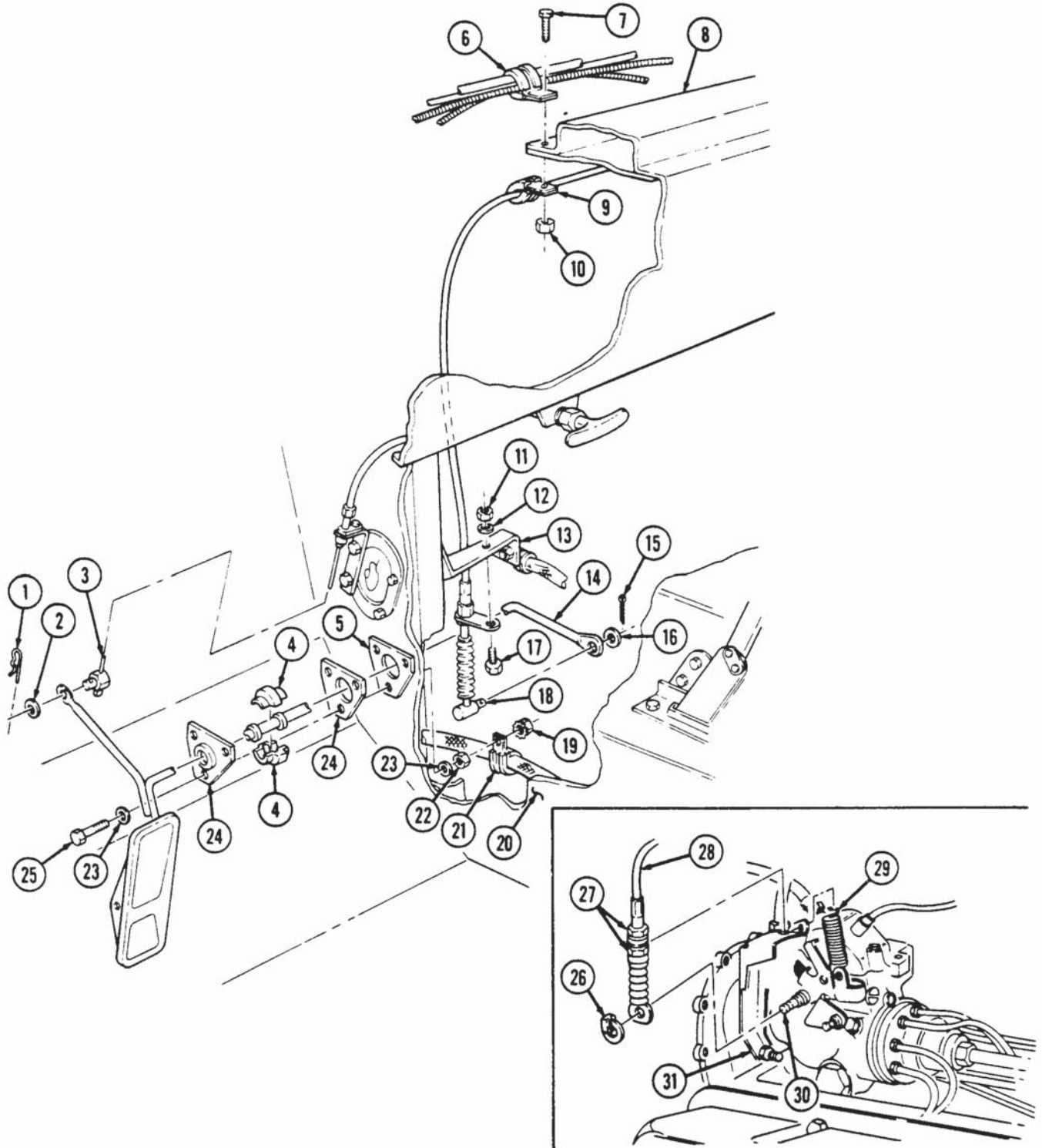
Bushing halves may detach from accelerator pedal rod during removal.

5. Pull accelerator pedal rod (14) forward through gasket (5) in cowl (20) and remove accelerator pedal rod (14).
6. Remove accelerator rod retainers (24) and bushing halves (4) from accelerator pedal rod (14).
7. Remove gasket (5) from cowl (20).
8. Remove locknut (11), washer (12), capscrew (17), and accelerator cable clevis (18) from body bracket (13). Discard locknut (11).
9. Remove nut (10), capscrew (7), and clamps (6) and (9) from A-beam (8).
10. Loosen two nuts (27) and disconnect accelerator cable (28) from engine bracket (31).
11. Disconnect throttle return spring (29) from engine bracket (31).
12. Remove accelerator cable clip (26) and accelerator cable (28) from injection pump throttle shaft (30).

3-42. ACCELERATOR LINKAGE MAINTENANCE (Cont'd)

b. Inspection

Inspect throttle return spring (29) for damage. Replace if defective.



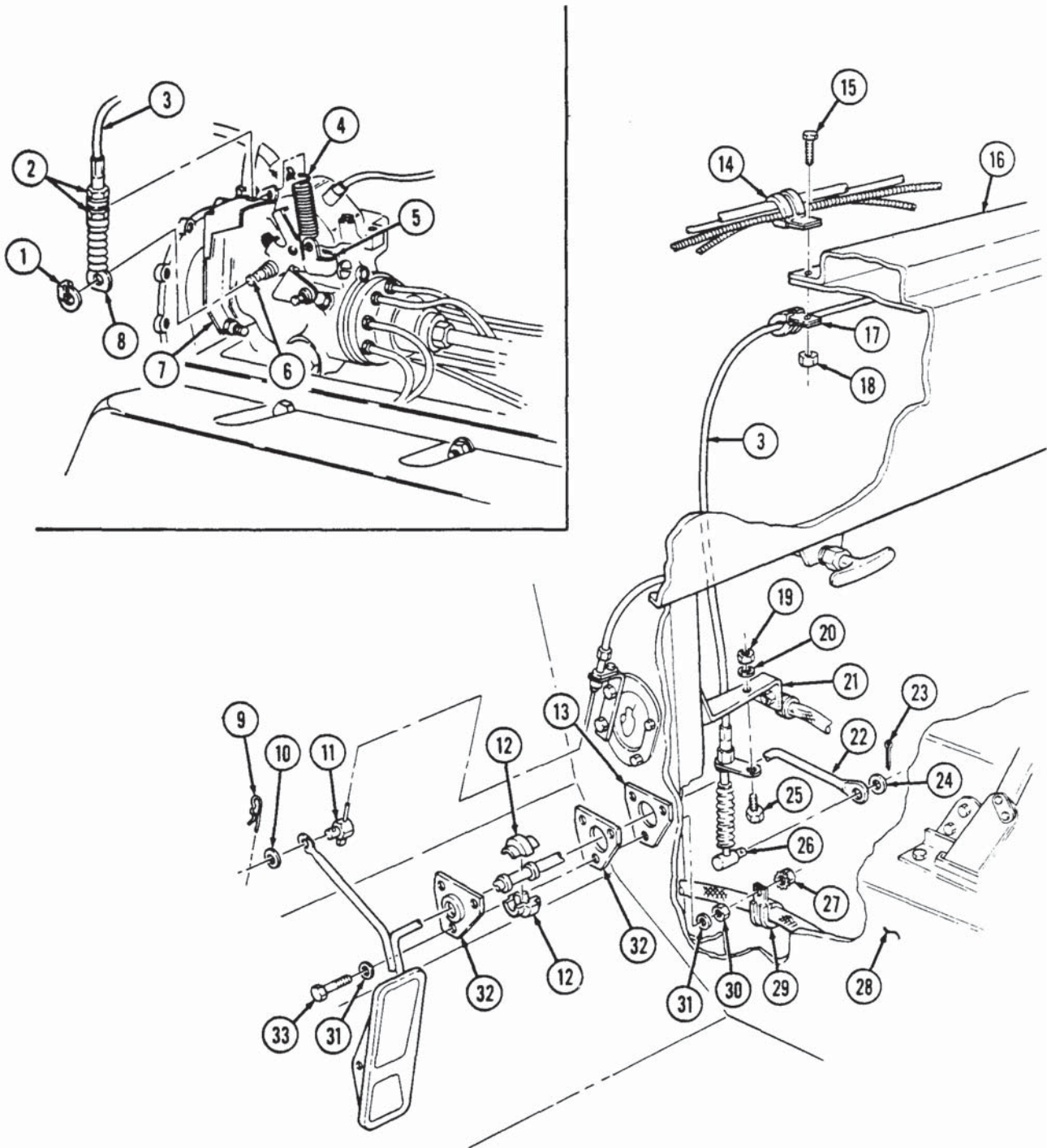
3-42. ACCELERATOR LINKAGE MAINTENANCE (Cont'd)**c. Installation**

1. Connect accelerator cable (3) to injection pump throttle shaft (6).
2. Position throttle shaft lever (5) to full throttle position and install accelerator cable (3) with accelerator cable clip (1) to injection pump throttle shaft (6).
3. Connect throttle return spring (4) to engine bracket (7).
4. Install cable assembly (3) to engine bracket (7) and tighten two nuts (2).
5. Install clamp (17) to cable assembly (3) and install clamps (14) and (17) to "A" beam (16) with capscrew (15) and nut (18).
6. Install accelerator cable clevis (26) to body bracket (21) with capscrew (25), washer (20), and nut (19).
7. Position gasket (13) to cowl (28).
8. Lubricate accelerator bushing halves (12) and accelerator pedal rod (22) at accelerator rod retainer (32) with lubricating oil.
9. Position accelerator rod retainers (32) and bushing halves (12) onto accelerator pedal rod (22) ensuring retainers (32) are properly seated over bushing halves (12).
10. Install accelerator rod retainers (32), accelerator pedal rod (22), and gasket (13) to cowl (28) with three capscrews (33), washers (31), washers (31), and locknuts (30). Install clamp (29) to bottom capscrew (33) with assembled locknut (27).
11. Connect hand throttle clevis (11) to accelerator pedal rod (22) with washer (10) and hitch pin (9).
12. Connect accelerator cable clevis (26) to accelerator pedal rod (22) with washer (24) and cotter pin (23).

d. Adjustment

1. Loosen accelerator cable nuts (2) on engine bracket (7).
2. Fully depress accelerator pedal.
3. Hold throttle shaft lever (5) in full throttle position.
4. Adjust accelerator cable nuts (2) up or down so cable end (8) holds throttle shaft lever (5) in full throttle position.
5. Tighten nuts (2) securing accelerator cable (3) to engine bracket (7).
6. Release accelerator pedal and ensure throttle shaft lever (5) returns all the way to idle position.

3-42. ACCELERATOR LINKAGE MAINTENANCE (Cont'd)



- FOLLOW-ON TASKS:
- Install engine access cover (para. 10-15).
 - Lower and secure hood (TM 9-2320-280-10).
 - Start engine (TM 9-2320-280-10) and check for proper accelerator operation.

3-43. ACCELERATOR PEDAL REPLACEMENT

This task covers:

a. Removal

b. Installation

INITIAL SETUP:

Tools

General mechanic's tool kit:
automotive (Appendix B, Item 1)

Manual References

TM 9-2320-280-10
TM 9-2320-280-24P

Materials/Parts

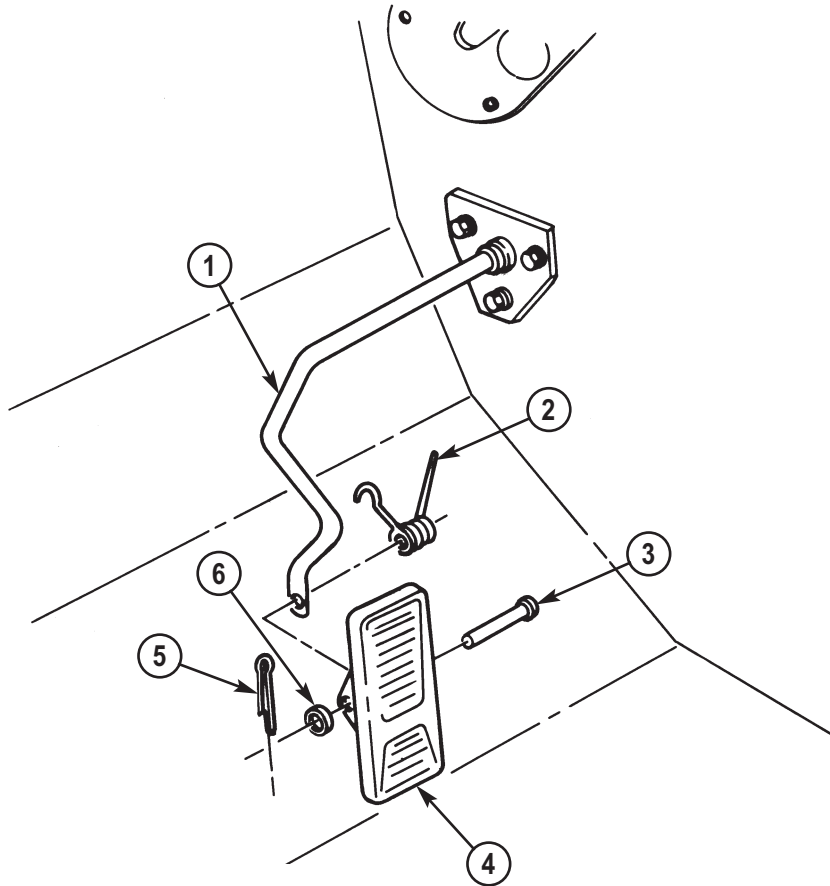
Cotter pin (Appendix G, Item 11)

a. Removal

Remove cotter pin (5), washer (6), and pin (3) from accelerator rod (1), and remove accelerator pedal (4) and spring (2). Discard cotter pin (5).

b. Installation

Install accelerator pedal (4) and spring (2) on accelerator rod (1) with pin (3), washer (6), and cotter pin (5).



FOLLOW-ON TASK: Start engine (TM 9-2320-280-10) and check for proper accelerator operation.

3-44. ENGINE IDLE SPEED ADJUSTMENT

This task covers:

Engine Idle Speed Adjustment

INITIAL SETUP:

Tools

General mechanic's tool kit:
automotive (Appendix B, Item 1)

Test Equipment

STE/ICE-R

Manual References

TM 9-2320-280-10

Equipment Condition

Hood raised and secured (TM 9-2320-280-10).

General Safety Instructions

Keep hands and arms away from fan blade and drivebelts while engine is running.

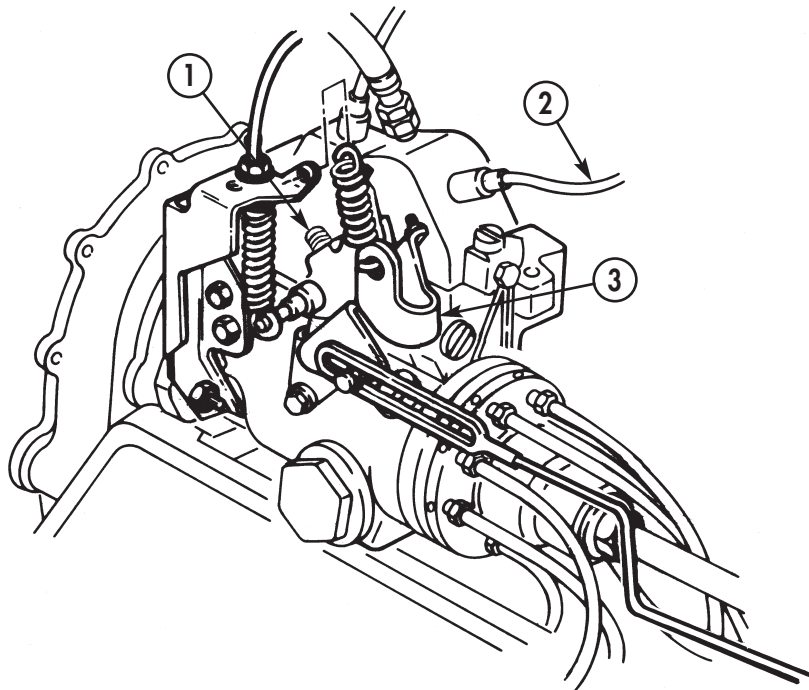
Engine Idle Speed Adjustment

1. Start engine (TM 9-2320-280-10) and bring engine to operating temperature.
2. Note idle speed and disconnect lead 569B (2) from injection pump (4). If change in idle speed is noted, refer to para. 2-22, Fuel System Tests. If no change in idle speed is noted, connect lead 569B (2) to injection pump (4) and proceed to step 3.

WARNING

Keep hands and arms away from fan blade and drivebelts while engine is running or serious injury may result.

3. Set engine idle speed to 650 rpm (± 25 rpm) for the 6.2L engine or 700 rpm (± 25 rpm) for the 6.5L engine by turning idle speed adjusting screw (1) on throttle shaft lever (3).



FOLLOW-ON TASK: Lower and secure hood (TM 9-2320-280-10).

3-45. HAND THROTTLE CONTROL CABLE AND BRACKET REPLACEMENT

This task covers:

a. Removal

b. Installation

INITIAL SETUP:

Tools

General mechanic's tool kit:
automotive (Appendix B, Item 1)

Personnel Required

One mechanic
One assistant

Materials/Parts

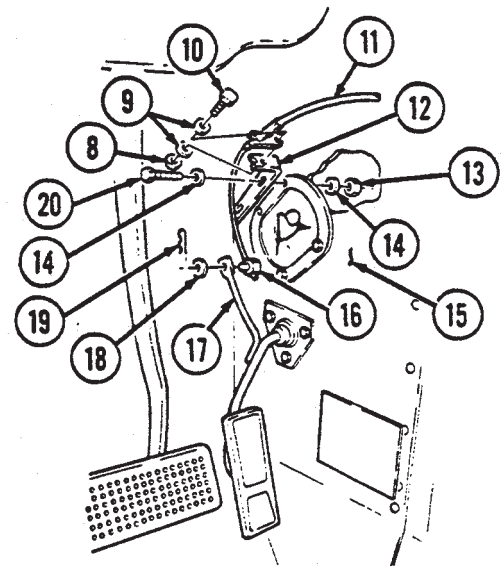
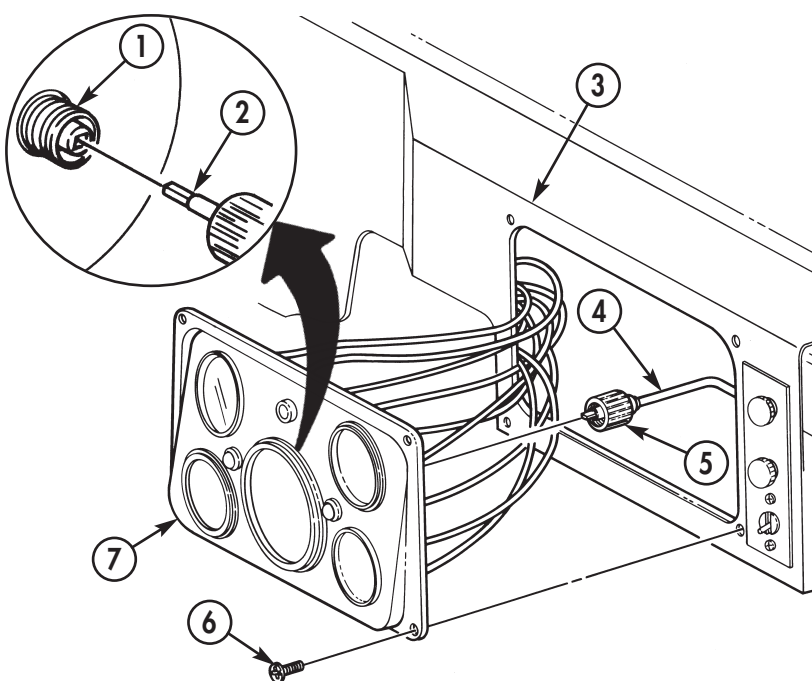
Four locknuts (Appendix G, Item 70)
O-ring (Appendix G, Item 212)

Manual References

TM 9-2320-280-24P

a. Removal

1. Remove four screws (6) and instrument cluster (7) from instrument panel (3) and pull instrument cluster (7) away to allow access to speedometer cable (4).
2. Loosen nut (5) and disconnect speedometer cable (4) from speedometer (1).
3. Remove hitch pin (19) and washer (18) and disconnect hand throttle clevis (16) from accelerator rod (17).
4. Remove locknut (8), washer (9), screw (10), washer (9), and hand throttle cable (11) from bracket (12). Discard locknut (8).
5. Remove two locknuts (13), washers (14), capscrews (20), washers (14), and bracket (12) from cowl (15). Discard locknuts (13).
6. Loosen nut (25) and hand throttle cable (11) from bracket (23).
7. Remove locknut (21), washer (28), capscrew (27), and washer (28) from bracket (23) and instrument panel (3). Discard locknut (21).
8. Remove nut (22), screw (24), and bracket (23) from instrument panel (3).
9. Remove setscrew (30) and handle (31) from hand throttle cable (11).
10. Remove nut (25), O-ring (33), and nut (26) from hand throttle cable (11). Discard O-ring (33).



3-45. HAND THROTTLE CONTROL CABLE AND BRACKET REPLACEMENT (Cont'd)

b. Installation

1. Install nut (26), O-ring (33), and nut (25) on hand throttle cable (11).
2. Install handle (31) on hand throttle cable (11) with setscrew (30).
3. Install bracket (23) on instrument panel (3) with screw (24) and nut (22). Do not tighten.
4. Align holes in bracket (23), instrument panel (3), and steering column bracket (29) with washer (28), capscrew (27), washer (28) and locknut (21).
5. Tighten screw (24) and nut (22).
6. Install hand throttle cable (11) on bracket (23) with nut (25).
7. Install bracket (12) on cowl (15) with two washers (14), capscrews (20), washers (14), and locknuts (13).
8. Install hand throttle cable (11) on bracket (12) with washer (9), screw (10), washer (9), and locknut (8).
9. Connect clevis (16) to accelerator rod (17) with washer (18) and hitch pin (19).
10. Connect speedometer cable (4) to speedometer (1), ensuring core (2) engages with square hole in speedometer (1), and tighten nut (5).
11. Install instrument cluster (7) in instrument panel (3) with four screws (6).

