

3-4. ENGINE OIL FILTER ADAPTER REPLACEMENT

This task covers:

a. Removal

b. Installation

INITIAL SETUP:

Tools

General mechanic's tool kit:
automotive (Appendix B, Item 1)

Manual References

TM 9-2320-280-24P

Materials/Parts

Gasket (Appendix G, Item 53)
Two O-rings (Appendix G, Item 210)
O-ring (Appendix G, Item 211)

Equipment Condition

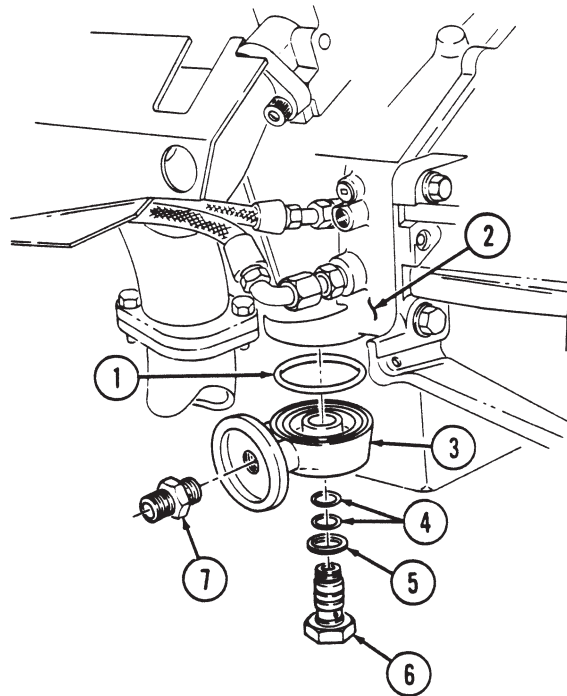
Engine oil filter removed (para. 3-5).

a. Removal

1. Remove adapter bolt (6), gasket (5), two O-rings (4), engine oil filter adapter (3), and O-ring (1) from cylinder block (2). Discard O-ring (1), two O-rings (4), and gasket (5).
2. Remove reducer boss (7) from oil adapter (3).
3. Inspect reducer boss (7) for damaged threads or cracks. Replace if defective.

b. Installation

1. Install reducer boss (7) into oil filter adapter (3) and tighten to 25 lb-ft (34 N•m).
2. Install engine oil filter adapter (3) and O-ring (1) on cylinder block (2) with two O-rings (4), gasket (5), and adapter bolt (6). Tighten adapter bolt (6) to 50 lb-ft (68 N•m).



FOLLOW-ON TASK: Install engine oil filter (para. 3-5).

3-5. ENGINE OIL SERVICE

This task covers:

- | | |
|--------------------|----------------------|
| a. Draining Oil | c. Installing Filter |
| b. Removing Filter | d. Replenishing Oil |

INITIAL SETUP:

Tools

General mechanic's tool kit:
 automotive (Appendix B, Item 1)
 Oil filter removal tool (Appendix B, Item 2)

Materials/Parts

Oil filter (Appendix G, Item 206) (6.2L only)
 Oil filter (Appendix G, Item 206.1)
 (6.5L and 6.5L detuned only)
 Lubricating oil (Appendix C, Item 31)

Manual References

TM 9-2320-280-10
 TM 9-2320-280-24P

Equipment Condition

Hood raised and secured (TM 9-2320-280-10).

General Safety Instructions

Do not drain oil when engine is hot.

a. Draining Oil

WARNING

Do not drain oil when engine is hot. Severe injury to personnel will result.

NOTE

- Park vehicle on a firm, level surface.
 - Have drainage container ready to catch oil.
1. Remove drainplug (5) and gasket (4) from oil pan (3). Allow oil to drain completely.
 2. Install gasket (4) and drainplug (5). Tighten drainplug (5) to 20 lb-ft (27 N•m).

b. Removing Filter

NOTE

Have drainage container ready to catch oil.

Remove oil filter (1) from filter adapter (2). Discard filter (1).

c. Installing Filter

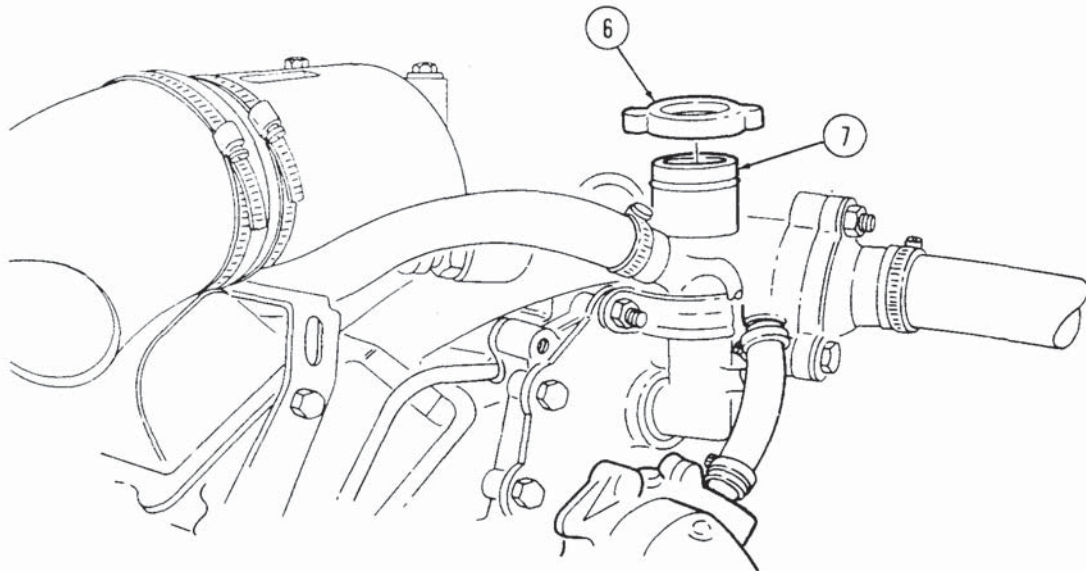
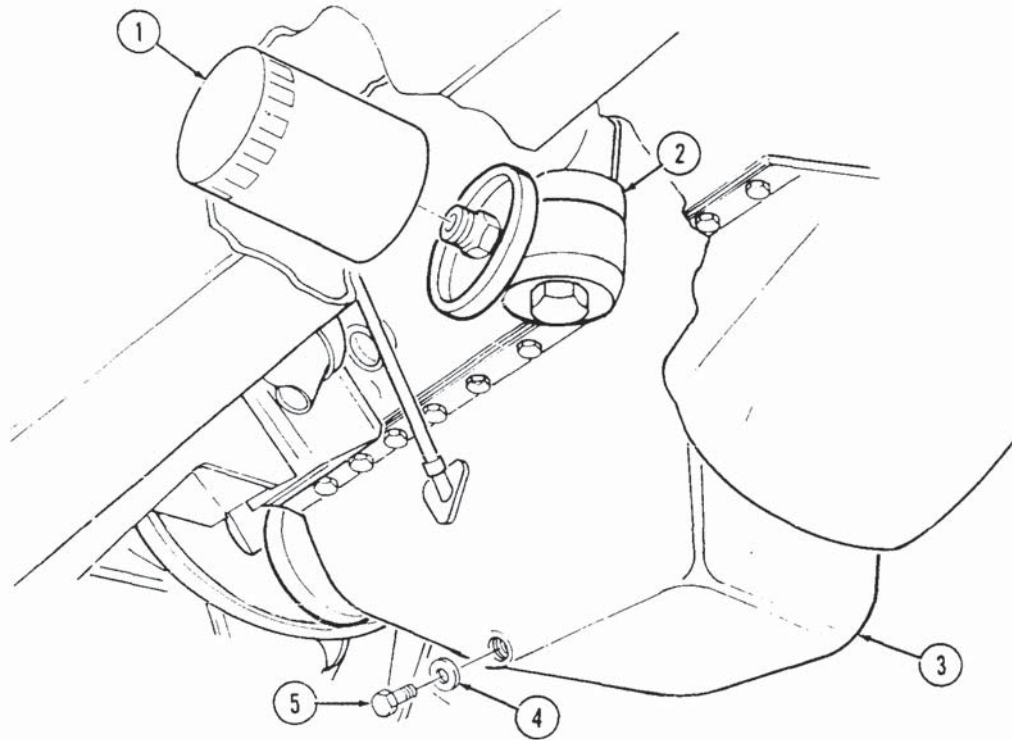
1. Apply a light coat of oil to filter gasket prior to installation
2. Install oil filter (1) on oil filter adapter (2) and tighten by hand until gasket contacts filter adapter (2). Tighten additional 1/2-3/4 turn by hand.

d. Replenishing Oil

CAUTION

Install a non-vented filler cap only. An incorrect filler cap will not seal properly, causing water to enter and damage engine.

1. Remove filler cap (6) from filler tube (7). Fill with oil according to TM 9-2320-280-10.
2. Install filler cap (6) on filler tube (7).

3-5. ENGINE OIL SERVICE (Cont'd)

- FOLLOW-ON TASKS:**
- Lower and secure hood (TM 9-2320-280-10).
 - Start engine (TM 9-2320-280-10) and inspect for leaks at oil filter and drainplug.