

3-23. FUEL PUMP REPLACEMENT

This task covers:

a. Removal

b. Installation

INITIAL SETUP:

Tools

General mechanic's tool kit:
automotive (Appendix B, Item 1)

Materials/Parts

Mounting plate gasket (Appendix G, Item 198)
Fuel pump gasket (Appendix G, Item 40)
Grease (Appendix C, Item 22)

Manual References

TM 9-2320-280-10
TM 9-2320-280-24P

Equipment Condition

Battery ground cable disconnected (para. 4-73).

General Safety Instructions

- Do not perform this procedure near fire, flames, or sparks.
- Gaskets installed on some 6.2L engines assembled prior to 1991 may contain asbestos. Gaskets should be disposed of IAW current directives.

WARNING

Diesel fuel is highly flammable. Do not perform this procedure near fire, flames, or sparks. Severe injury or death will result.

a. Removal

CAUTION

Cover or plug all open hoses and connections immediately after disconnection to prevent contamination. Remove all plugs prior to connection.

NOTE

Have drainage container ready to catch fuel.

1. Loosen clamp (14) and disconnect fuel inlet line (13) from fuel pump (2) and allow fuel to drain into container.
2. Disconnect fuel outlet line (12) from fuel pump (2) and allow fuel to drain into container.
3. Loosen clamp (3) and disconnect vent line (4) from fuel pump (2).

WARNING

Gaskets installed on some 6.2L engines assembled prior to 1991 may contain asbestos. Gaskets should be removed with a scraper or putty knife and then be disposed of IAW current directives. Inhalation of asbestos fibers can cause respiratory ailments.

4. Remove two capscrews (1), fuel pump (2) and gasket (6) from fuel pump mounting plate (7). Discard gasket (6).
5. Remove two capscrews (11), fuel pump mounting plate (7) and gasket (8) from cylinder block (10). Discard gasket (8).
6. Remove pushrod (9) from cylinder block (10).

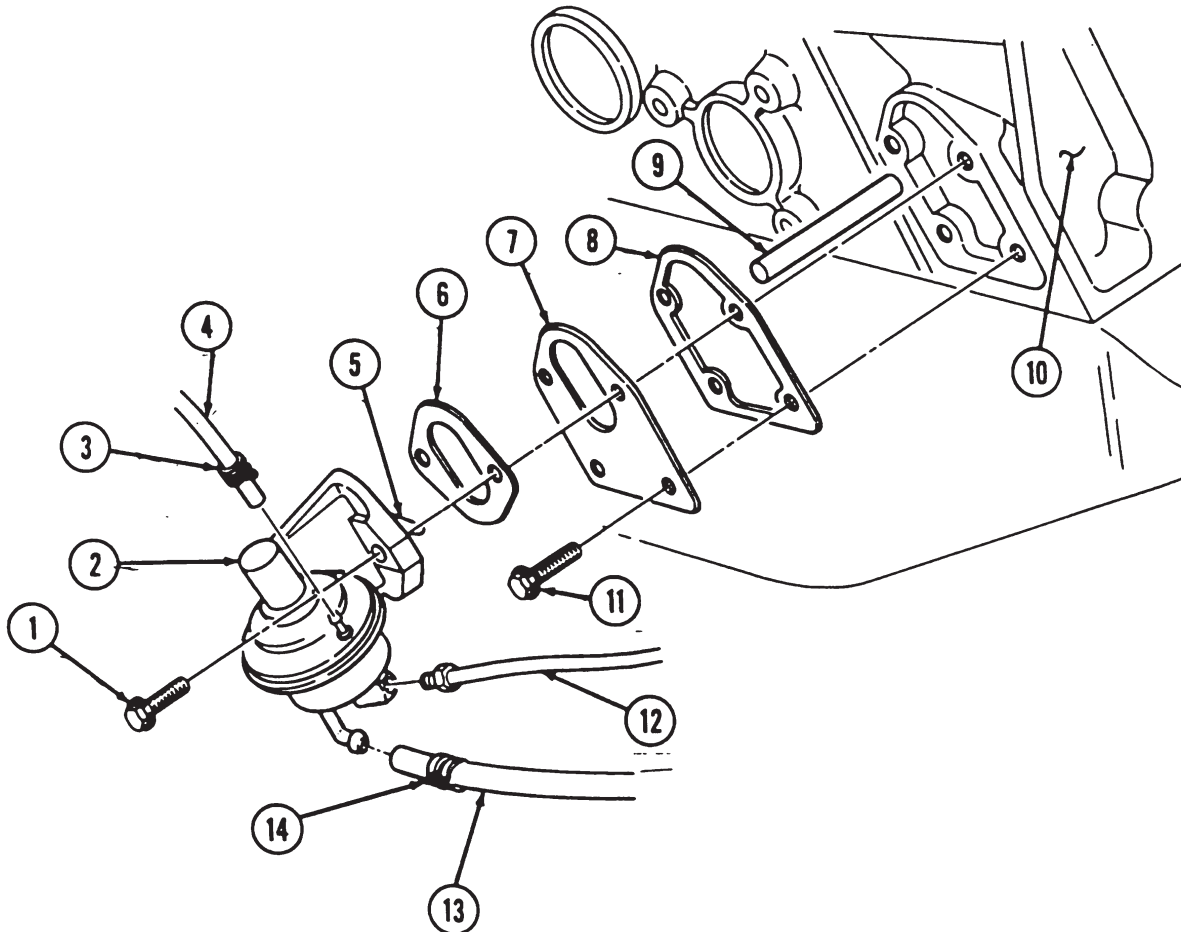
3-23. FUEL PUMP REPLACEMENT (Cont'd)

b. Installation

NOTE

Place GAA grease on pushrod to retain in cylinder block during installation.

1. Insert pushrod (9) into cylinder block (10).
2. Install gasket (8) and mounting plate (7) into block (10) with two capscrews (1) for alignment of pump (2) to cylinder block (10).
3. Secure gasket (8) and mounting plate (7) to cylinder block (10) with two capscrews (11). Tighten capscrews (11) to 4-7 lb-ft (5-10 N•m) then remove two capscrews (1).
4. Install gasket (6) and fuel pump (2) on fuel pump mounting plate (7) and block (10), ensuring alignment of lever (5) to pushrod (9) with two capscrews (1). Tighten capscrews (1) to 20-30 lb-ft (27-41 N•m).
5. Connect vent line (4) to fuel pump (2) and tighten clamp (3) to 10-20 lb-in. (1-2 N•m).
6. Connect fuel outlet line (12) to fuel pump (2).
7. Connect fuel inlet line (13) to fuel pump (2) and tighten clamp (14).



- FOLLOW-ON TASKS:
- Connect battery ground cable (para 4-73).
 - Start engine (TM 9-2320-280-10) and check fuel pump and hoses for fuel leaks.